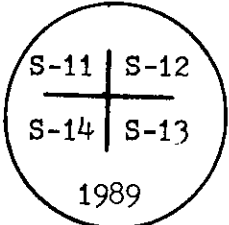


'89 APR 10 AM 9 47

CERTIFIED LAND CORNER RECORDATION

DESCRIPTION OF CORNER EVIDENCE FOUND, AND ORIGINAL RECORD (If known)



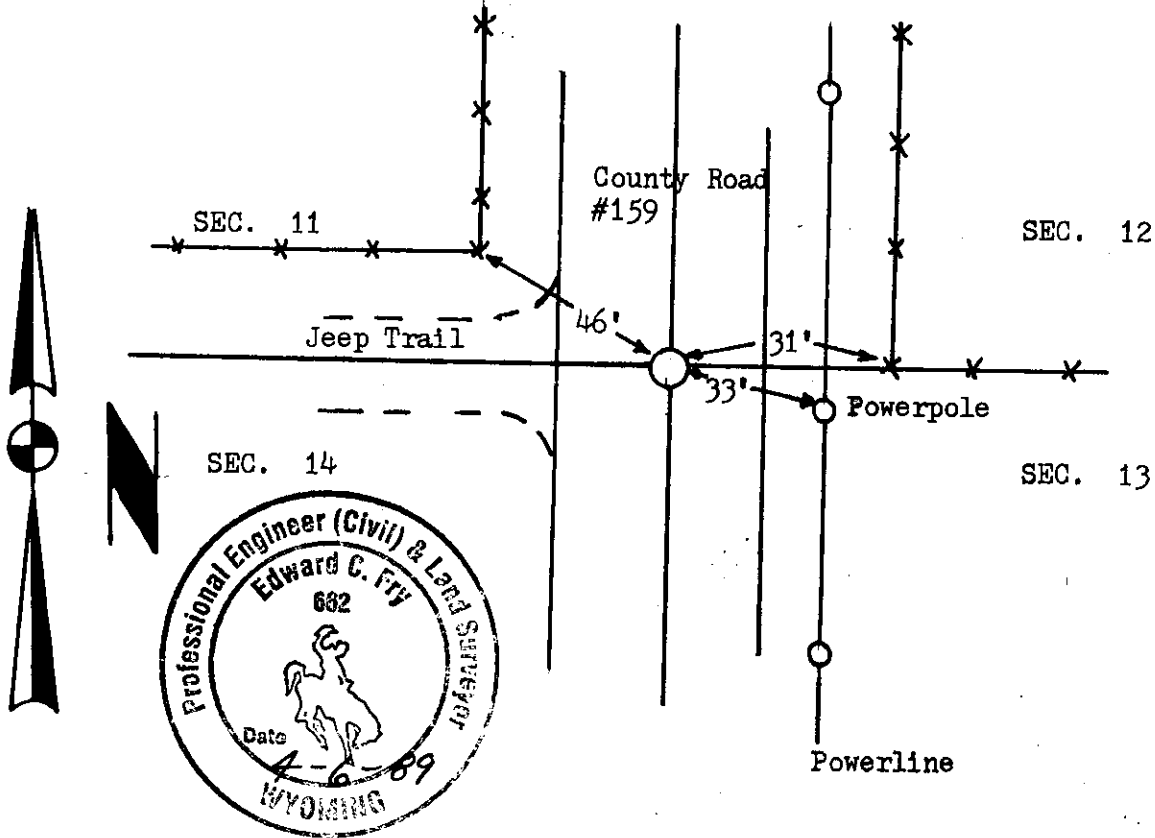
T 13 N R 61 W

Found a bent rebar with a survkap P.E./L.S. 529. G.L.O. monument is described as a limestone 20"x12"x8" set by government surveyor J. Wesley Hearnmond in the year 1871.

DESCRIPTION OF MONUMENT AND ACCESSORIES ESTABLISHED TO PERPETUATE THE ORIGINAL LOCATION OF THIS CORNER:

Removed bent five eights rebar with aluminum survkap and replaced it with a 2"x24" galvanized iron pipe with a aluminum survkap with section numbers stamped on it set twelve inches below ground in center line of county road # 159.

SKETCH, WITH COURSE AND DISTANCE TO ADJACENT CORNER IF DETERMINED IN THIS SURVEY. (May Sketch or Paste Reproduction on Reverse Side.)



NO SCALE
Field Survey
April 1989

I, Edward C. Fry certify that I have carefully ~~performed~~ reviewed the work done on the diagrammed corner as reported on this recordation form and approve the same.

Edward C. Fry P.E./L.S. # 662
Signature of Surveyor Registration No.

STATE OF WYOMING,
Office of Clerk and Recorder,
County of _____

This "corner record" was filed for record on the _____ day of _____, 19____, was noted on the cross-index plat and is assigned page No. _____, in book No. _____

| County Official | | | |
|-----------------------------|---------------|---------------|------------|
| Cross Index No. <u>J-21</u> | T. <u>13N</u> | R. <u>61W</u> | Mer. _____ |
| _____ | T. _____ | R. _____ | Mer. _____ |
| _____ | T. _____ | R. _____ | Mer. _____ |
| _____ | T. _____ | R. _____ | Mer. _____ |
| _____ | T. _____ | R. _____ | Mer. _____ |
| _____ | T. _____ | R. _____ | Mer. _____ |
| _____ | T. _____ | R. _____ | Mer. _____ |